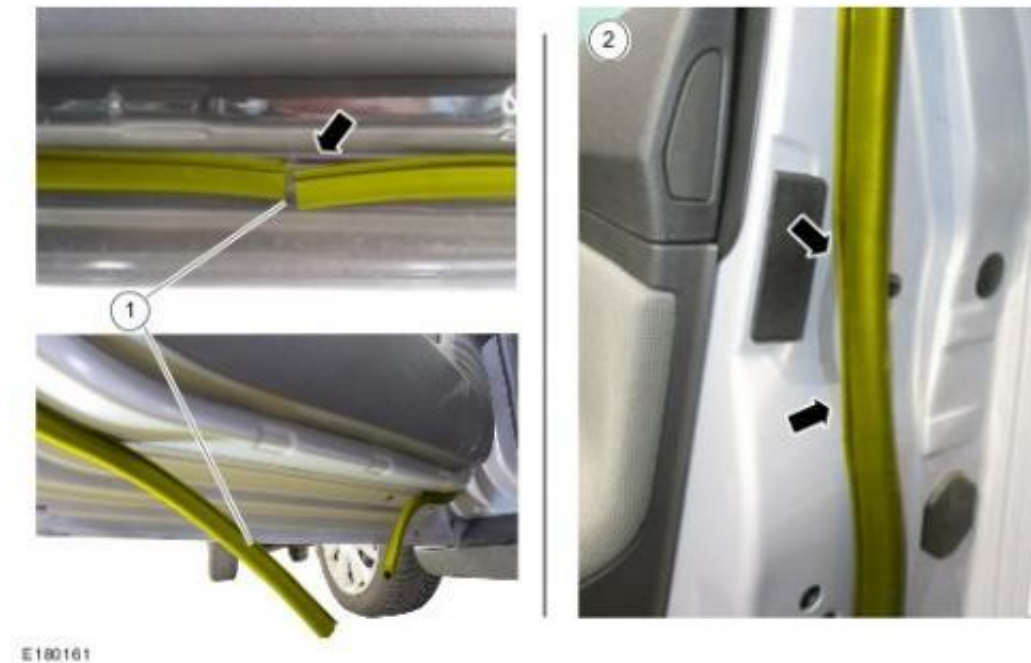


Service Information:

Damage symptoms of the door weatherstrip (Focus 2011.25 front door shown, all other similar)

NOTE: It would not be possible that these two different damage symptoms (1 & 2) are called at same time.



- 1: Slightly stripped off and partially removed front door weatherstrip on the door underside
- 2: Partially removed front door weatherstrip in the area of the door latch

Service Instruction:

Attach the door weatherstrip to the door frame

1: **WARNING:** Safety instructions of material equipment provided by the manufacturer must be observed.

Prepare the repair adhesive kit. Refer to the manufacturer's directions.

2: In reference to the damage symptom, the inside vulcanised fine wire should be cut.

1: Bend the door weatherstrip to get access to the inside vulcanised fine wire.

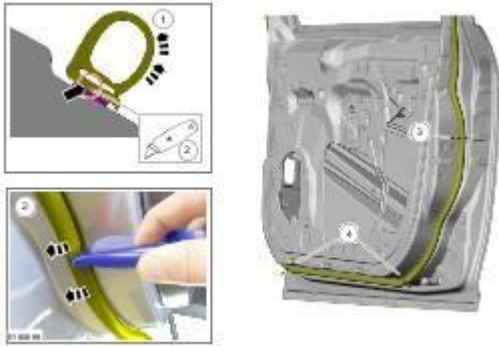
CAUTION: Do not damage the paint surface. The wire snap can audible be observed.

2: Briefly cut through the fine wire.

3: Range of separation for partially removed weatherstrips in the area of the door latch.

4: Range of separation for partially removed weatherstrips on the door underside.

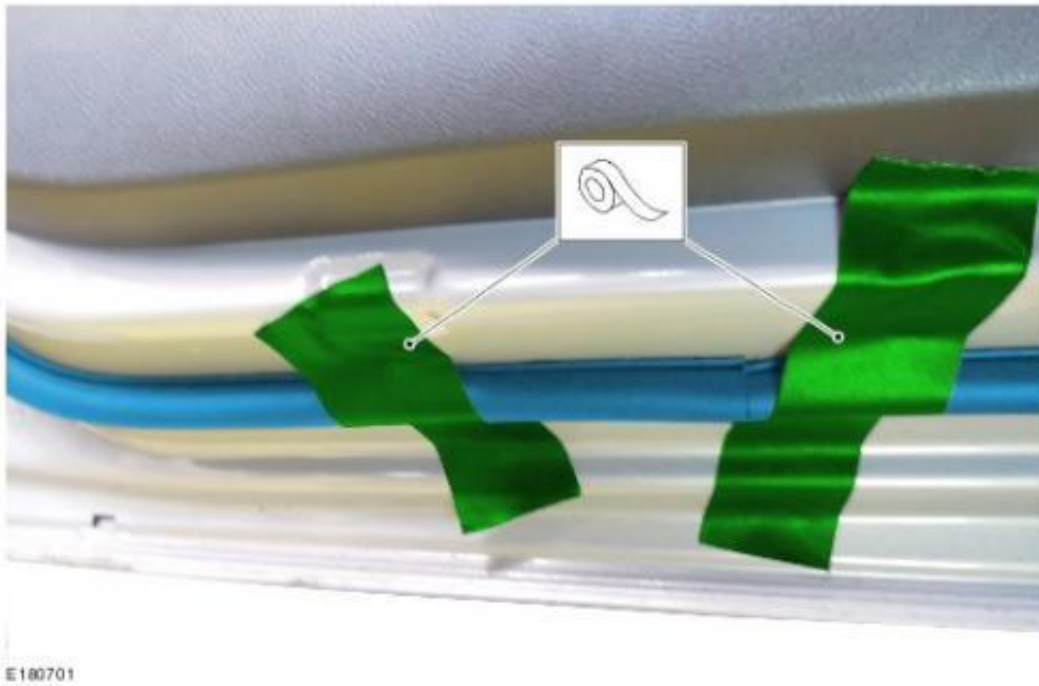
◦Clean and dry the repair area. It is not required to remove any remaining traces of adhesive from the door frame.



- 3: NOTE: Allow the repair adhesive to dry (drying time ≥ 1 hour).
 Apply repair adhesive (see Parts Required) to the door weatherstrip (door underside shown, other repair areas similar).
 °Max. Ø of adhesive bead: 3 mm



- 4: Place the door weatherstrip on the door frame in the correct position. Secure the door weatherstrip on the door frame using tape (door underside shown, other repair areas similar).



5: NOTE: If the ambient temperature falls below 10°C, apply warm air (25°C) continuously. Press the door outer weatherstrip home for at least one minute in order to obtain complete adhesion (door underside shown, other repair areas similar).

1: Using a suitable plastic roller to press-on the weatherstrip. make sure that equal pressure is applied to the component.

2: Carefully check the correct position of the weatherstrip on the door frame.

◦Allow the repair adhesive to dry in reference to the manufacturers' directions but not less than 5 hours.

◦Remove any used tape.



6.If required, repeat steps 2 to 5 on the remaining doors.